



## PHASE SEQUENCE TESTER TKF-12

## PHASE SEQUENCE AND MOTOR ROTATION TESTER TKF-13



### Standard equipment of TKF-12:

- black crocodile - 1 piece, (WAKROBL20K01)
- pin probe with banana connector (red, black and yellow) - 3 pieces, (WASONREGB1, WASONBLOGB1, WASONYEOGB1)
- operation manual.

### Additional equipment of TKF-12:

- red and yellow crocodile, (WAKRORE20K05, WAKROYE20K02)
- three phase socket adapter (WAADAC1C2),
- carrying case (WAFUTS1).

### Standard equipment of test apparatus TKF-13:

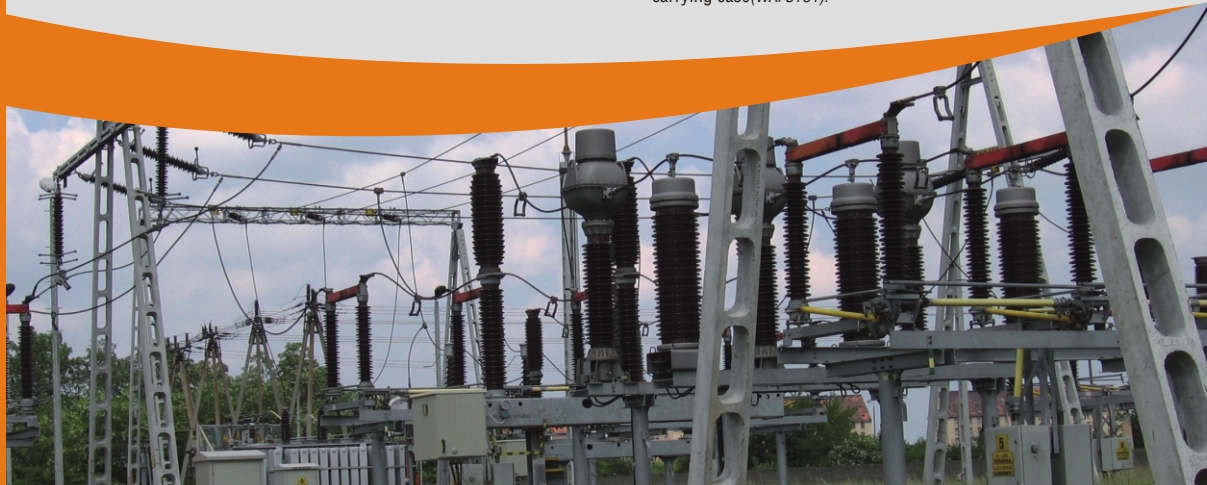
- test lead 1.2m (red, black and yellow) - 3 pieces, (WAPRZ1X2REBB, WAPRZ1X2BLBB, WAPRZ1X2YEBB)
- black crocodile - 1 piece, (WAKROBL20K01)
- pin probe with banana connector (red, black and yellow) - 3 pieces, (WASONREGB1, WASONBLOGB1, WASONYEOGB1)
- battery 9V - 1 piece,
- operation manual.

### Additional equipment of test apparatus TKF-13:

- red and yellow crocodile, (WAKRORE20K05, WAKROYE20K02)
- three phase socket adapter (WAADAC1C2)
- carrying case (WAFUTS1).

Sonel S.A.  
ul. Wokulskiego 11  
58-100 Świdnica, PL  
tel. +48 74 85 83 860  
fax +48 74 85 83 809

export@sonel.pl  
www.sonel.pl



## TKF-12

- Phase sequence indication (direction of field rotation) in the power network with rated phase-to-phase voltage (120...690V) AC by LED signalization.
- Operation in the power network with frequency range 10...70Hz.
- Indication of the voltage presence in the particular phases by neon lamps signalization.
- Power supply from the tested network (continuous operation to 15 minutes for max. voltage).

### Electric security:

- class insulation double, according to PN-EN 61010-1
- safety category III 600V acc. to PN-EN 61010-1
- casing protection class acc. to PN-EN 60529 IP42

### Rated operational conditions:

- operating temperature -10...+45°C
- storage temperature -20...+60°C
- frequency range 10...70Hz
- rated phase-to-phase range 120...690V AC
- maximum operation phase-to-phase voltage 760V AC

### Other technical data:

- power supply from tested network, to 15 min for max. voltage
- guarantee 36 months

## TKF-13

- Phase sequence indication (direction of field rotation) in the power network with rated phase-to-phase voltage (120...690V AC) by LED signalization.
- Operation in the power network with frequency 2...70Hz.
- Indication of the voltage presence in the particular phases by means of neon lamps.
- Indication of direction of motor rotations:
  - under state without voltage with using the test leads,
  - remonte, during motor operation.
- Detection of magnetic field presence.
- Auto off.

### Electric security:

- class insulation double, according to PN-EN 61010-1
- safety category III 600V acc. to PN-EN 61010-1
- casing protection class acc. to PN-EN 60529 IP42

### Rated operational conditions:

- operation temperature -10...+45°C
- storage temperature -20...+60°C
- frequency range 2...70Hz
- SEM motors voltage range 1...760V AC
- rated phase-to-phase range 120...690V AC
- maximum operation phase-to-phase voltage 760V AC

### Other technical data:

- test apparatus supply alkaline battery 6LR61 (9V)
- diode flashing time of battery state ca. 1s
- automatic switching off time ca. 5min
- guarantee 36 months

