

DiaCAM²

A foolproof design



3 seconds
only to start up

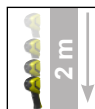
13 hours of continuous operation!

- Focus-free with 20° x 20° field of view
- Vocal annotations to record your comments directly on the image
- Connection to current clamps and multimeters: all the necessary measurements simultaneously

Bluetooth

IP
54

USB



Measure up



Exceptional ergonomics for simplified use

Wide 2.8-inch screen

More comfortable viewing thanks to automatic (or manual) adaptation of display brightness to suit your environment



Contextual help for simple, error-free use

Direct access to the functions with just one hand

Specially designed for excellent handling and simplified use



Balance guaranteed: thanks to the tripod insert located under the camera or positioned on a table, the camera does not move.

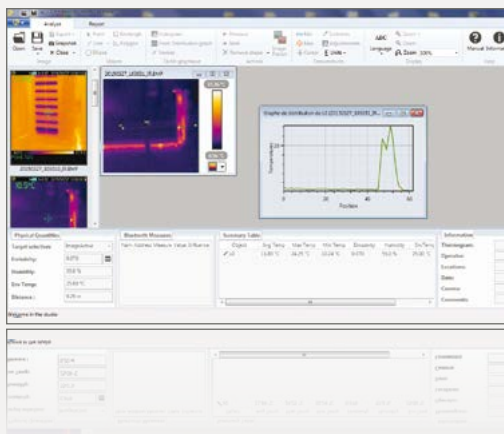
Protective flap: comfortable to use, no losses, no scratches

20° x 20° field of view with focus-free imaging. The image is automatically in focus whatever the distance to the object targeted

Recovery of the necessary measurements (current, etc.) via **Bluetooth** simultaneously

Even more user-friendly and simple to use thanks to:

- the exceptional 13-hour battery life
- an emissivity table which can be added to as required
- the possibility of renaming images and thermograms by site
- recording and storage of the configurations according to the application (building, electrical cabinet, etc.)



CamReport, the software for analysing

This comprehensive software offers all the necessary functions for reliable analysis of the measurement results:

- ➔ Cursors (automatic display of the temperature at the point selected)
- ➔ Thermal profile (automatic display of the Min/Max/Avg temperatures on the line)

Applications

The C.A 1950 makes it very simple to perform your thermal inspections for your energy audit and ensures trouble-free industrial, electrical or mechanical maintenance.

For buildings

The Diacam2 C.A 1950 is a powerful tool for analysing new or old buildings. This thermal camera enables you to detect faults and anomalies such as:

- thermal bridges
- insulation faults on the exterior of a building
- draught-proofing
- presence of excessive humidity

The C.A 1950 can also be used to search for water leaks and detect embedded or blocked pipes.



For industrial maintenance

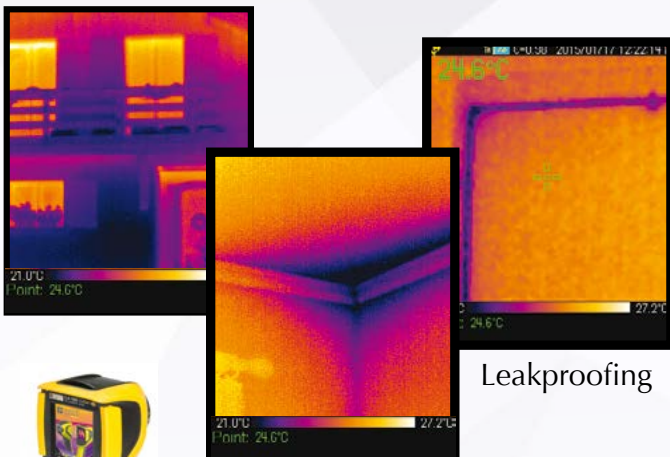
For electrical maintenance, the C.A 1950 can detect electrical equipment malfunctions, particularly abnormal heating, before a fault occurs, thus avoiding the considerable cost of halting production or carrying out repairs:

- Faulty electrical contacts
- Unbalance
- Incorrect sizing

For mechanical maintenance, the C.A 1950 is ideal, offering quick diagnostics thanks to:

- detection of anomalies or malfunctions on internal components to prevent motor overheating
- verification and inspections on the parts and mechanical assemblies such as: wear points, poor shaft alignment, lubrication problems, adjustment errors.

Insulation

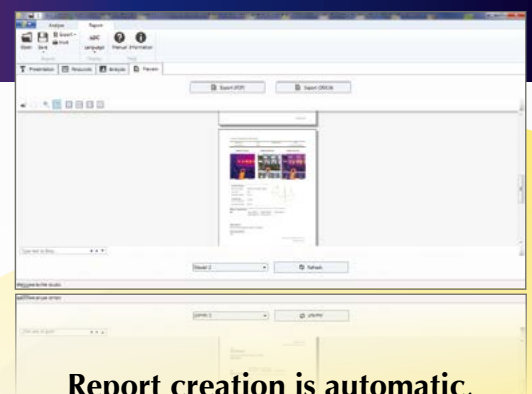


Thermal bridge

Leakproofing

thermograms

- ➔ A square or circle for area analysis
- ➔ Results tables quickly and automatically display all the information/analysis tools for the thermogram
- ➔ Polygons and polylines to analyse certain areas in the thermogram more closely
- ➔ Standard emissivity table which can be added to by users



Report creation is automatic, using the various templates available. Reports can be exported in Word or pdf format. This makes it simpler to print them out and/or archive them.

DETECTOR SPECIFICATIONS

Detector	80 x 80
Type	UFPA microbolometer, 8 ~14 µm
Frequency	9 Hz
Sensitivity (N.E.T.D)	80 mK @ 30°C (0.08 °C @ 30 °C)

TEMPERATURE MEASUREMENT

Temperature range	-20 °C to +250 °C
Accuracy	±2 °C or ±2 % of reading

IMAGE PERFORMANCE

Thermal image	
Field of view	20° x 20°
IFOV (spatial resolution)	4.4 mrad
Focus	Fixed
Minimum focal distance	40 cm
Real image	Yes (320 x 240 pixels)
Display mode	Thermal image, real image with automatic parallax compensation. Merging of both images possible with PC software

FUNCTIONS FOR ANALYSIS

Measurement tools	1 manual cursor + 1 automatic detection + Min-Max on adjustable area + temperature profile + Isotherm
Parameter settings	Emissivity, environmental temperature, distance, relative humidity
Vocal comments	Yes via Bluetooth (earphones provided)
Connectivity	F407 and F607 clamps, MTX 3292 and MTX 3293 multimeters
Data storage	On 2 GB micro SD card (approx. 4,000 images) removable up to 32 GB
Removable, up to 32 GB	.bmp (thermal and real images recorded simultaneously)

PRESENTATION OF IMAGE

Adjustment	Automatic or manual adjustment of palette min-max
Freezing of image	Animated or fixed image
Image display	Multi-palette
Screen	2.8 inches

POWER SUPPLY

Type	NiMH rechargeable batteries with low self-discharge
Recharging	External (charger provided)

ENVIRONMENTAL SPECIFICATIONS

Operating temperature	-15 °C to +50 °C (-4 °F to +122 °F)
Storage temperature	-40 °C to +70 °C (-40 °F to +158 °F)
Humidity	10 % to 95 %
Standards	EN 61326-1: 2006 / EN 61010-1 Ed.2
Fall resistance	2 metres on all surfaces
Shock resistance	25 G
Vibration resistance	2 G

PHYSICAL SPECIFICATIONS

Weight / Dimensions	700 g with rechargeable batteries / 225 x 125 x 83
Ingress protection	IP 54
Interfaces	- USB link and Mass Storage function: the product is then recognized as a USB drive for easy transfer of the images - Bluetooth for connectivity with earphones (vocal comments) and Chauvin Arnoux® Metrix® measuring instruments (F407, F607, MTX 3292, MTX 3293)
Tripod mounting	Yes with ¼" insert on the camera

GENERAL SPECIFICATIONS

Report creation software	Supplied as standard with automatic report generation in .pdf or .docx (Word) format / Compatible with W7 and W8, 32 and 64 Bits
Warranty	2 years

Standard state at delivery:

C.A 1950: delivered in hard case with 4 NiMH batteries and battery charger, 1 micro SD HD card, 1 USB cable, 1 set of Bluetooth earphones, CAMReport software on CD ROM, operating manuals.

To order:

C.A 1950 DiaCAm2 thermal camera P01651901
Thermography training Please contact us

FRANCE
Chauvin Arnoux
190, rue Championnet
75876 PARIS Cedex 18
Tel: +33 1 44 85 44 38
Fax: +33 1 46 27 95 59
export@chauvin-arnoux.fr
www.chauvin-arnoux.com

UNITED KINGDOM
Chauvin Arnoux LTD
Unit 1 Nelson Ct, Flagship Sq, Shaw Cross Business Pk
Dewsbury, West Yorkshire - WF12 7TH
Tel: +44 1924 460 494
Fax: +44 1924 455 328
info@chauvin-arnoux.co.uk
www.chauvin-arnoux.com

MIDDLE EAST
Chauvin Arnoux Middle East
P.O. BOX 60-154
1241 2020 JAL EL DIB - LEBANON
Tel: +961 1 890 425
Fax: +961 1 890 424
camie@chauvin-arnoux.com
www.chauvin-arnoux.com

