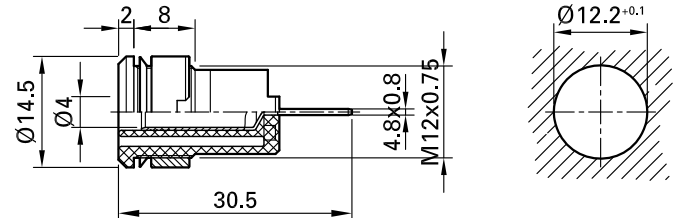
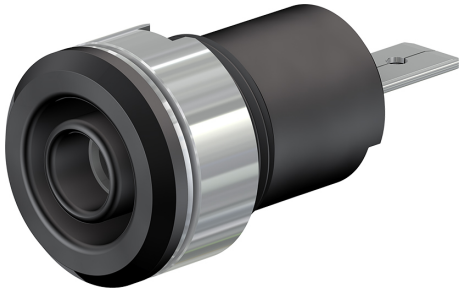


SLB4-F/A



Item number 23.3070-*

Insulated, rigid, \varnothing 4 mm, accepting spring-loaded \varnothing 4 mm plugs with rigid insulating sleeve. Brass sheet. The socket is screwed into pre-drilled panels of plastic, metal, etc. Flat connecting tab 4.8 mm x 0.8 mm, can be bent to 90°, once only.

Technical data	
Diameter of plug system	4 mm
Rated Values	1000 V, CAT III, 24 A
Surface treatment electrical contact	Ni
Base material electrical contact	CuZn
Standard color(s) *	20 21 22 23 24 25 26 27 28 29
Test accessory acc. to	IEC EN 61010-2-030
Supplied assembly material	MUR/M12x0,75; SSP4
Remarks	Accessories: Flat connecting receptacle FSH4,8x0,8; Tube spanner SS2; Tube spanner SS425
Approvals	UR